

# PRODUCT INFORMATION PACKET

Model No: 182TTFW16085  
Catalog No: K700A  
1 1/2, 1200, TEFC, 182TC, 3/60/230/460  
Totally Enclosed Fan Cooled (TEFC)



Regal and Marathon are trademarks of Regal Beloit Corporation or one of its affiliated companies.  
©2018 Regal Beloit Corporation, All Rights Reserved. MC017097E





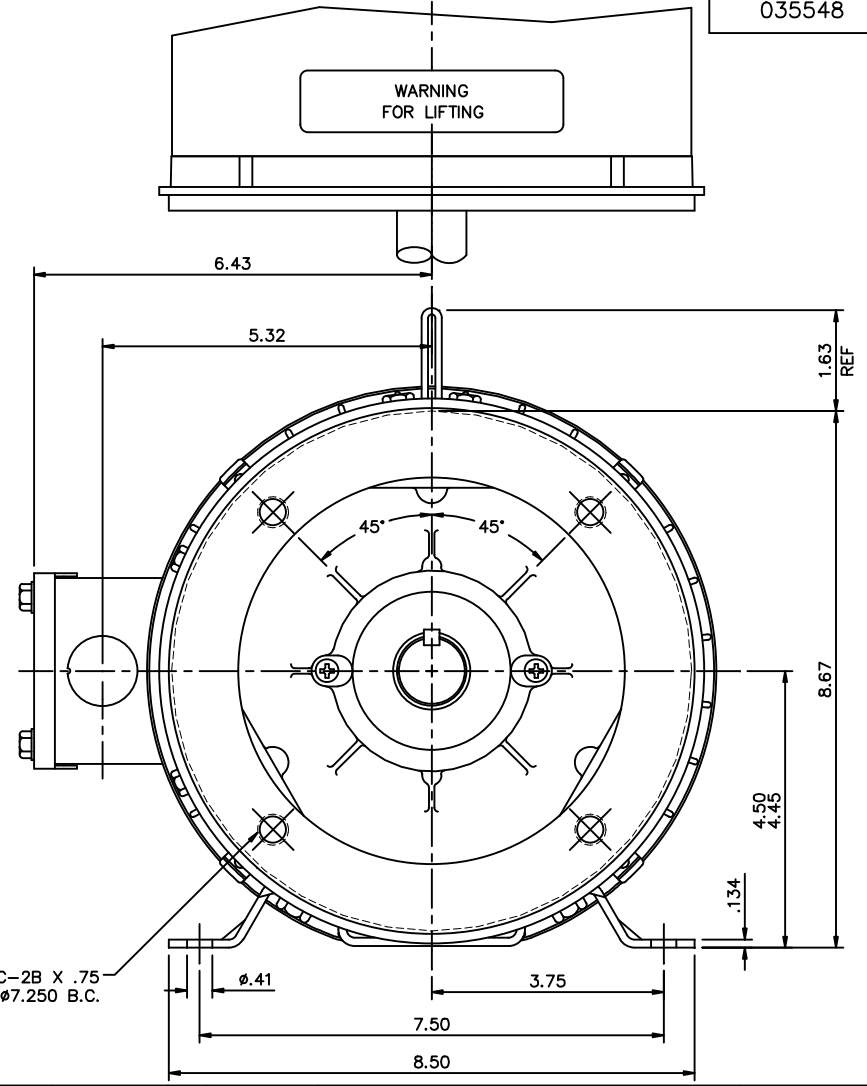
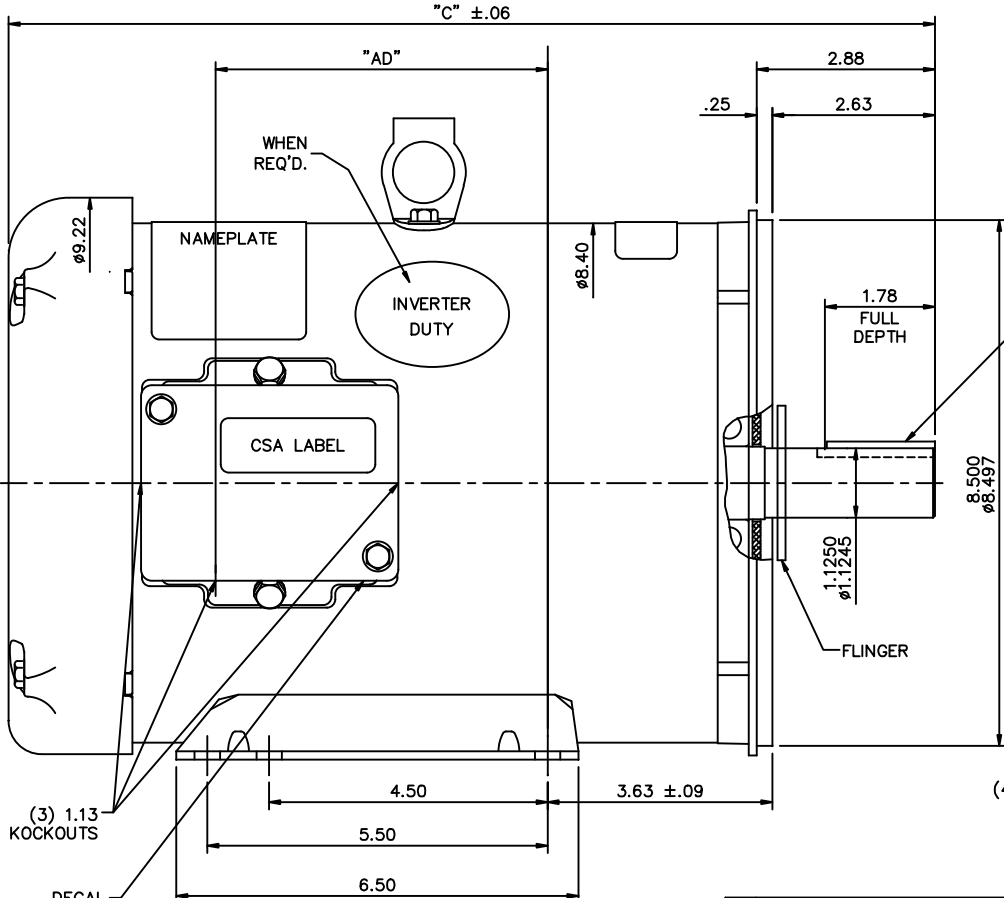
### Nameplate Specifications

Output HP	<b>1.50 Hp</b>	Output KW	<b>1.1 kW</b>
Frequency	<b>60 Hz</b>	Voltage	<b>230/460 V</b>
Current	<b>6.0/3.0 A</b>	Speed	<b>1170 rpm</b>
Service Factor	<b>1</b>	Phase	<b>3</b>
Efficiency	<b>87.5 %</b>	Duty	<b>Continuous</b>
Insulation Class	<b>F</b>	Design Code	<b>B</b>
KVA Code	<b>K</b>	Frame	<b>182TC</b>
Enclosure	<b>Totally Enclosed Fan Cooled</b>	Overload Protector	<b>No</b>
Ambient Temperature	<b>40 °C</b>	Drive End Bearing Size	<b>6206</b>
Opp Drive End Bearing Size	<b>6205</b>	UL	<b>Recognized</b>
CSA	<b>Y</b>	CE	<b>Y</b>
IP Code	<b>43</b>		

### Technical Specifications

Electrical Type	<b>Squirrel Cage Induction Run</b>	Starting Method	<b>Across The Line</b>
Poles	<b>6</b>	Rotation	<b>Reversible</b>
Mounting	<b>Bolt-on Base</b>	Motor Orientation	<b>Horizontal</b>
Drive End Bearing	<b>Ball</b>	Opp Drive End Bearing	<b>Ball</b>
Frame Material	<b>Rolled Steel</b>	Shaft Type	<b>T</b>
Overall Length	<b>14.47 in</b>	Frame Length	<b>9.00 in</b>
Shaft Diameter	<b>1.125 in</b>	Shaft Extension	<b>2.88 in</b>
Assembly/Box Mounting	<b>F1 Only</b>		
Outline Drawing	<b>035548-900</b>	Connection Diagram	<b>005010.01ME</b>

This is an uncontrolled document once printed or downloaded and is subject to change without notice. Date Created: 06/29/2018



(3) 1.13 KOCKOUTS  
 DECAL CONNECTION UNDER COVER

DASH NO.	"C"	"AD"
850	13.97	4.37
900	14.47	4.87
950	14.97	5.37
1000	15.47	5.87
1050	15.97	6.37
1100	16.47	6.87
1150	16.97	7.37

MAXIMUM FACE RUNOUT TO BE .004 T.I.R.  
 MAXIMUM PILOT ECCENTRICITY TO BE .004 T.I.R.  
 PERMISSIBLE SHAFT RUNOUT TO BE .002 T.I.R.

REVISION		BY & DATE	CHK	ANG	FINISH	SIZE	DRAWING NO.	REV.
01	ADD CSA DECAL PER ISAAC 11-1477	LST 3/29/11				B	035548	01

TOLERANCES UNLESS SPECIFIED		MARATHON ELECTRIC		DRAWN VV 08/14/07	
DEC.	INCHES	TITLE		CHK	RDW 09/10/07
.X	±.1	OUTLINE - 180TC FRAME		APPD	
.XX	±.03	TEFC - RIGID "C"		SCALE	1=2
.XXX	±.005	BOLT-ON BASE		REF	035469
.XXXX	±.0005			FMF	
CHK	ANG ±1/2'			PREV	
RFP		CAD FILE	035548		
DIST	NLV				

THIS DRAWING IN DESIGN AND DETAIL IS OUR PROPERTY AND MUST NOT BE USED EXCEPT IN CONNECTION WITH OUR WORK ALL RIGHTS OF DESIGN AND INVENTION ARE RESERVED THIS IS AN ELECTRONICALLY GENERATED DOCUMENT - DO NOT SCALE THIS PRINT





